

ETA 29/33/37

FULL HYDRAULIC ARTICULATING NON-INSULATED



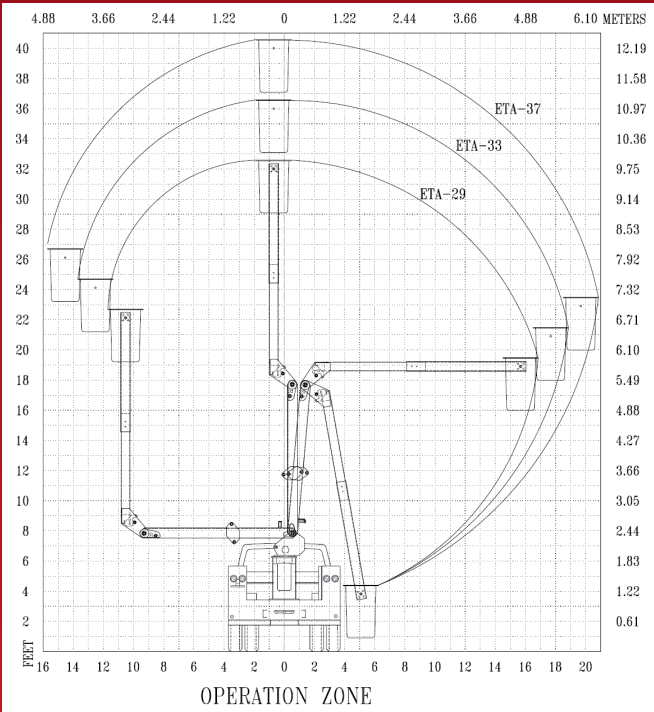
CUSTOMIZED SOLUTION

When versatility is a priority, this articulating aerial model is a winning solution that can be customized to a 34', 38' or 42' working height. With each working height, the ETA model aerial has continuous rotation, full pressure hydraulic controls, and a positive chain and rod leveling system as standard components. Options such as emergency hydraulic power, single handle controls, oversized bucket or non-insulated upper boom are among some of the ways to customize this unit to suit your particular needs.





ETA 29/33/37



**EQUIPMENT TECHNOLOGY LLC
IS A FULL SERVICE SOLUTION
PROVIDER OF THE HIGHEST
QUALITY DESIGN,
MANUFACTURING, AND POST
SALE SERVICE.**

EQUIPMENT TECHNOLOGY LLC

341 NW 122nd
Oklahoma City, OK 73114
Toll-Free: 1-888-748-3841 • Fax: 1-405-755-6829
etiequipment.com

GENERAL SPECIFICATIONS*

	ETA 29	ETA 33	ETA 37
Height to bottom of bucket*..	29 ft. - 0 in.	33 ft. - 0 in.	37 ft. - 0 in.
Working height	34 ft. - 0 in.	38 ft. - 0 in.	42 ft. - 0 in.
Side reach	17 ft. - 6 in.	19 ft. - 6 in.	21 ft. - 6 in.
Stow height*	9 ft. - 9 in.	9 ft. - 9 in.	9 ft. - 9 in.
Rated bucket capacity	350 lbs.	350 lbs.	350 lbs.
Operating pressure (min)	2,000 psi.	2,000 psi.	2,000 psi.
Operating volume	4 gpm	4 gpm	4.25 gpm

MINIMUM VEHICLE SPECIFICATIONS

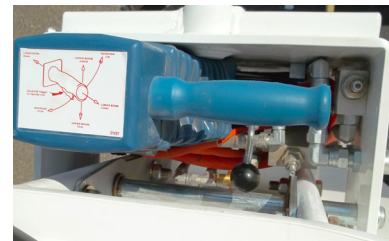
	ETA 29	ETA 33	ETA 37
GVWR (dual rear wheels).....	11,000 lbs.	11,000 lbs.	15,000 lbs.
GAWR (front)	4,100 lbs.	4,100 lbs.	5,000 lbs.
GAWR (rear)	8,250 lbs.	8,250 lbs.	11,000 lbs.
C.A.	60 in.	60 in.	60 in.

STANDARD FEATURES

- Continuous rotation is standard on all ETA units.
- Full pressure hydraulic controls located at basket and turret with full feathering capabilities from both upper and lower controls.
- Positive chain and rod leveling based on parallelogram system ensuring long life and minimum leveling system maintenance.
- Shear ball rotation gear driven by internal drive gear box. The gear box has an extended shaft for manual rotation.
- Internally mounted holding valves (integral part of cylinder) lock cylinders in place in the event of hydraulic failure.
- All pins turn on replaceable bushings.
- Ability to access body compartments from basket.

OPTIONS

- Emergency hydraulic power (12 volt DC)
- Engine start/stop system
- Hydraulic tool circuit
- Two speed throttle system
- Bucket tilt/rescue
- Single handle control
- One foot riser
- 69 KV rating - category B
- Bucket liner
- Bucket cover
- Lower boom insert (ETA 37 only)
- Non-insulated upper boom
- Electric tool circuit (non-insulated units)
- Air line to bucket
- Oversize bucket (24"x 30"x 42")
- Foul weather bucket/splicer bucket (non-insulated units)



Specifications are subject to change without notice
Note (*): All specifications are based on 40" frame height