

# ETO MH 40 IH

## OVERCENTER MATERIAL HANDLER



### INSULATED POWER

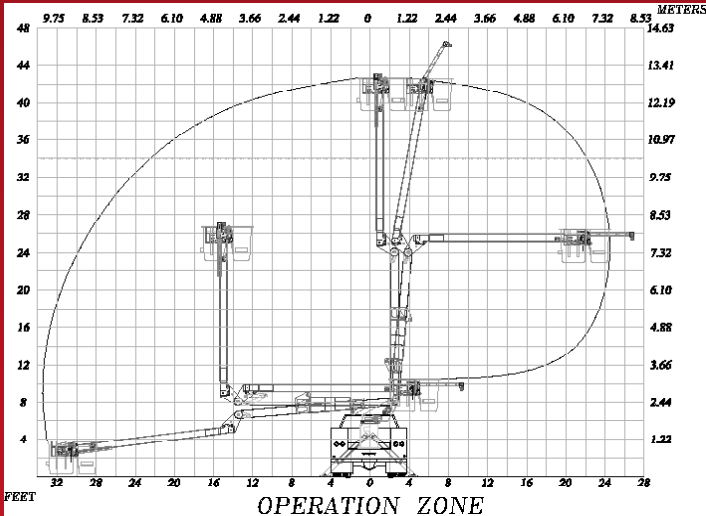
The ETO 40 MH is an articulating material handler that is a powerful insulated unit with a host of standard and optional features to satisfy the needs of our customers. With a working height of 45 feet, this unit offers continuous rotation, full pressure hydraulic controls, two sets of outriggers and a 400 pound bucket capacity as standard features. This model also offers powerful material handling capabilities with a hydraulic winch and a 5' jib that can lift up to 1,000 lbs. A hydraulic jib extension, outrigger/boom interlock or emergency hydraulic power are among the many options available.



DEPEND ON IT.™



# ETO MH40IH



**EQUIPMENT TECHNOLOGY LLC IS A FULL SERVICE SOLUTION PROVIDER OF THE HIGHEST QUALITY DESIGN, MANUFACTURING, AND POST SALE SERVICE.**

## EQUIPMENT TECHNOLOGY LLC

341 NW 122nd  
 Oklahoma City, OK 73114  
 Toll-Free: 1-888-748-3841 • Fax: 1-405-755-6829  
[etiequipment.com](http://etiequipment.com)

### GENERAL SPECIFICATIONS\*

Height to bottom of bucket.....39ft.-7in.  
 Working height.....44ft.-7in.  
 Side reach, End mount.....33ft.-4in.  
 Stowed height.....10ft.-8in.  
 Rated bucket capacity.....400lbs.

### MINIMUM VEHICLE SPECIFICATIONS

- GVWR (with Dual Rear Wheels)..... 15,000lbs.
- GAWR (front).....6,000lbs.
- GAWR (rear).....13,500lbs.
- C.A.....84in.

### STANDARD FEATURES

- Continuous rotation is standard on all ETO MH units.
- Full pressure hydraulic controls located at basket and turret with full feathering capabilities from both upper and lower controls.
- Positive chain and rod leveling based on parallelogram system ensuring long life and minimum leveling system maintenance.
- Shear ball rotation with an extended shaft for manual rotation.
- Internally mounted holding valves (integral part of cylinder) lock cylinders in place in the event of hydraulic failure.
- All pins turn on replaceable bushings.
- 90 degree bucket rotator.
- Single handle upper control.
- Lower boom fiberglass insert.
- Hydraulic winch and 5 ft. jib - up to 1,000 lbs. material handling capacity.
- 24" x 30" basket.
- 2 sets outriggers.
- 400 lbs. bucket capacity.

### OPTIONS

- Emergency hydraulic power (12VDC)
- Engine start/stop at bucket
- Hydraulic tool circuit
- Two speed throttle
- Bucket tilt/rescue
- 69 KV Rating - Category B
- Bucket liner
- Bucket cover
- Hydraulic extend jib
- Outrigger/boom interlock
- Single set outrigger

Specifications are subject to change without notice  
 Note (\*): All specifications are based on 40" frame height